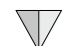



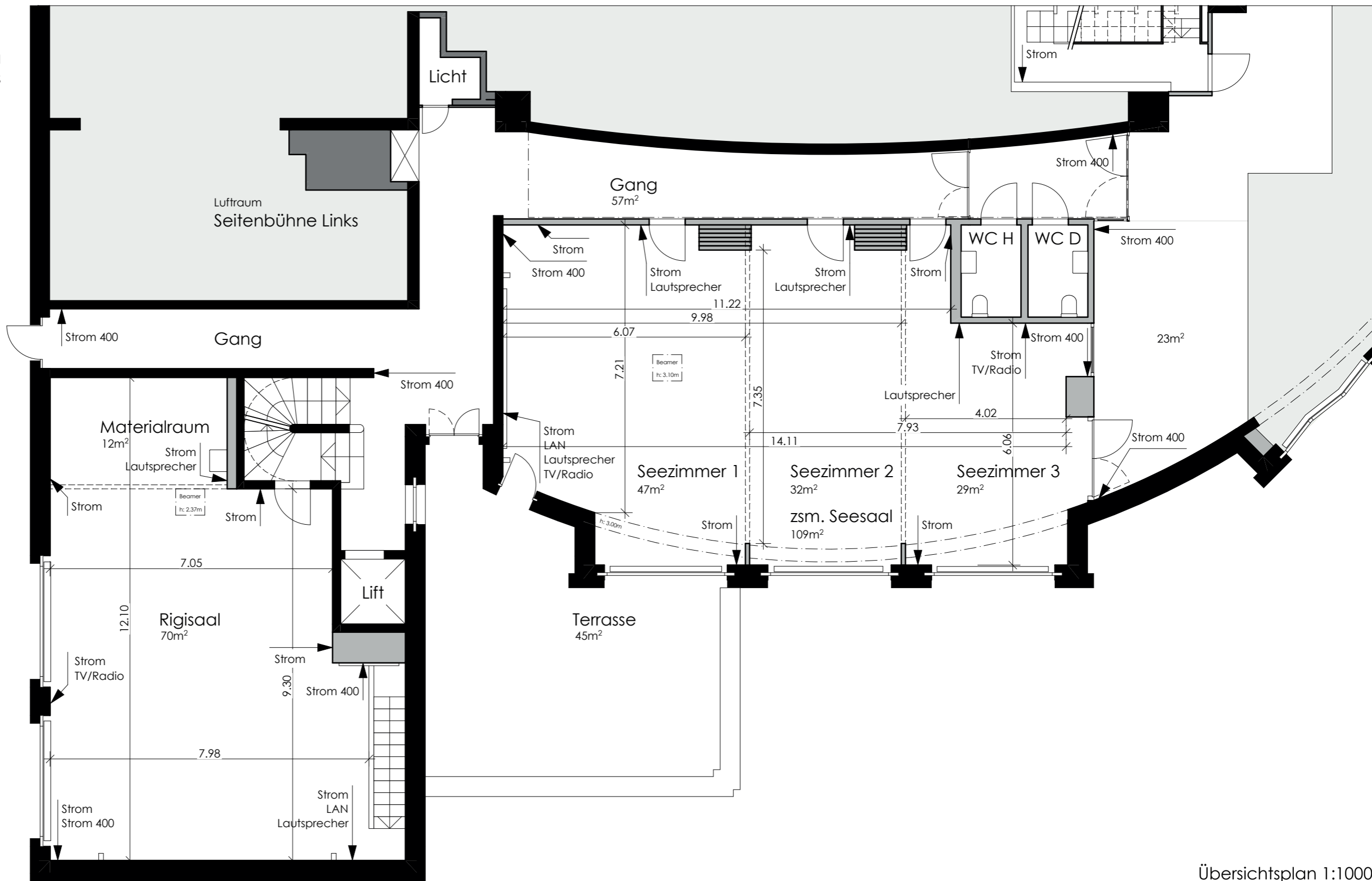
Raumhöhe Seesaal: 3.50m
 Raumhöhe Rigisaal: 5.40m

Legende:

-  Haupteingang
-  Seiteneingang

Bezeichnungen:

- Strom 400 400V T15
- Strom 240V T12 / T13



Übersichtsplan 1:1000

Grundriss Technik Seminarräume OG
 Seesaal, Rigisaal

